

REDEFINING BUILDING COMMUNICATION



ELEVATE YOUR COMMUNICATION TO THE NEXT LEVEL

KONE Information provides a simple yet flexible way to communicate with the people who use your building.

You can share targeted content via KONE MediaScreens in elevators and KONE MediaPlayers connected to other screens in your building.

Instead of relying on messy noticeboards and time-consuming manual updates, you can publish content quickly and easily from any PC with an internet connection.

TAKE CONTROL OF YOUR COMMUNICATIONS

KONE takes care of everything so you can focus on delivering the best communication experience for everyone who uses your building.

With KONE Information, all you need to do is choose the content to display from the available apps then publish immediately or schedule for later.

The service includes advanced features such as social media content sharing with filtering and post approval.

The service fee covers connectivity, cyber security and software updates, and 24/7 monitoring.



IMPROVED COMMUNICATION FOR EVERY TYPE OF BUILDING



COMMERCIAL
Offices, Hotels,
Restaurants,
Retail facilities



MEDICAL
Hospitals,
Healthcare centers



PUBLIC
Railroad stations,
Metro stations,
Educational institutes,
Libraries

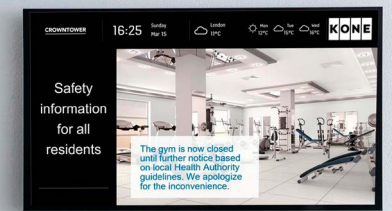


RESIDENTIAL
Apartment buildings,
Retirement housing,
Student housing



MEDIASCREEN

Reach elevator passengers with targeted information via a connected screen.



MEDIAPLAYER

Keep everyone in the building up to date by connecting to your existing screens

TECHNICAL SPECIFICATIONS

KONE MediaScreen

Screen type	TFT LCD
Screen size	15"
Viewing angle	≥ 80° (all directions)
Mounting	Wall mounted
Dimensions	Width: 372 mm Height: 296 mm Depth: 30.5 mm
Internet connection	4G + SIM (supplied by KONE)

KONE MediaPlayer

Connection	HDMI
Power	230 V
Dimensions	Width: 162 mm Height: 20 mm Depth: 91 mm
Internet connection	4G + SIM (supplied by KONE)

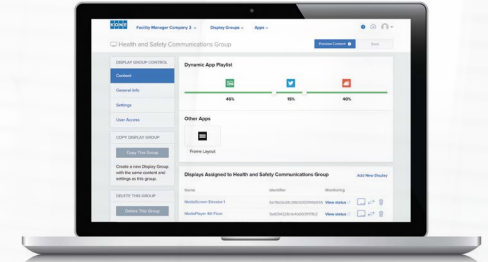
TAILORED SERVICE-PACKAGE OPTIONS

	Light	Standard	Premium
KONE Content Manager	✓	✓	✓
Connectivity and data transfer*	✓	✓	✓
Software and security updates	✓	✓	✓
Facility manager messaging	✓	✓	✓
Text and pictures	✓	✓	✓
Weather		✓	✓
RSS feed (for showing 3rd-party news etc.)		✓	✓
Traffic information			✓
Social media (Facebook, Instagram, Twitter)			✓

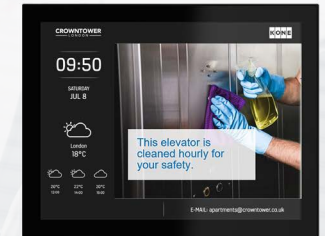
* Our service packages include a monthly mobile data allowance suitable for typical usage. Data usage exceeding this allowance is invoiced in accordance with KONE's current price list.

HOW IT WORKS

KONE Content Manager



KONE DIGITAL PLATFORM



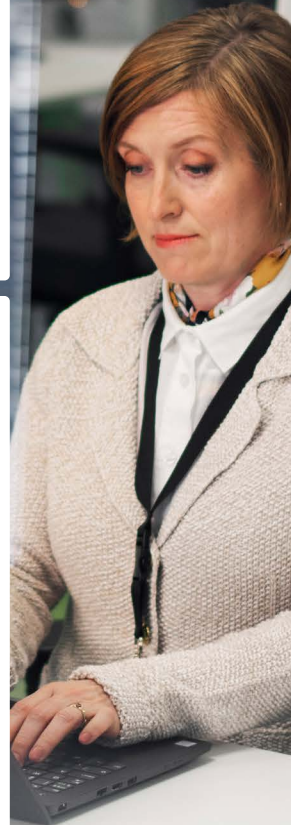
KONE MediaScreen



KONE MediaPlayer



All types of screens



KONE provides innovative and eco-efficient solutions for elevators, escalators, automatic building doors, and the systems that integrate them with today's intelligent buildings.

We support our customers every step of the way; from design, manufacturing, and installation to maintenance and modernization. KONE is a global leader in helping our customers manage the smooth flow of people and goods throughout their buildings.

Our commitment to customers is present in all KONE solutions. This makes us a reliable partner throughout the life cycle of the building. We challenge the conventional wisdom of the industry. We are fast, flexible, and we have a well-deserved reputation as a technology leader, with such innovations as KONE MonoSpace® DX, KONE NanoSpace™, and KONE UltraRope®.

KONE employs close to 57,000 dedicated experts to serve you globally and locally.

KONE CORPORATION

Corporate offices

Keilasatama 3
P.O. Box 7
FI-02151 Espoo
Finland
Tel. +358 (0)204 751

www.kone.xx

This publication is for general informational purposes only and we reserve the right at any time to alter the product design and specifications. No statement in this publication shall be construed as a warranty or condition, express or implied, as to any product, its fitness for any particular purpose, merchantability, quality or representation of the terms of any purchase agreement. Minor differences between printed and actual colors may exist. KONE MonoSpace® DX, KONE EcoDisc®, KONE Care® and People Flow® are registered trademarks of KONE Corporation. Copyright © 2019 KONE Corporation.